

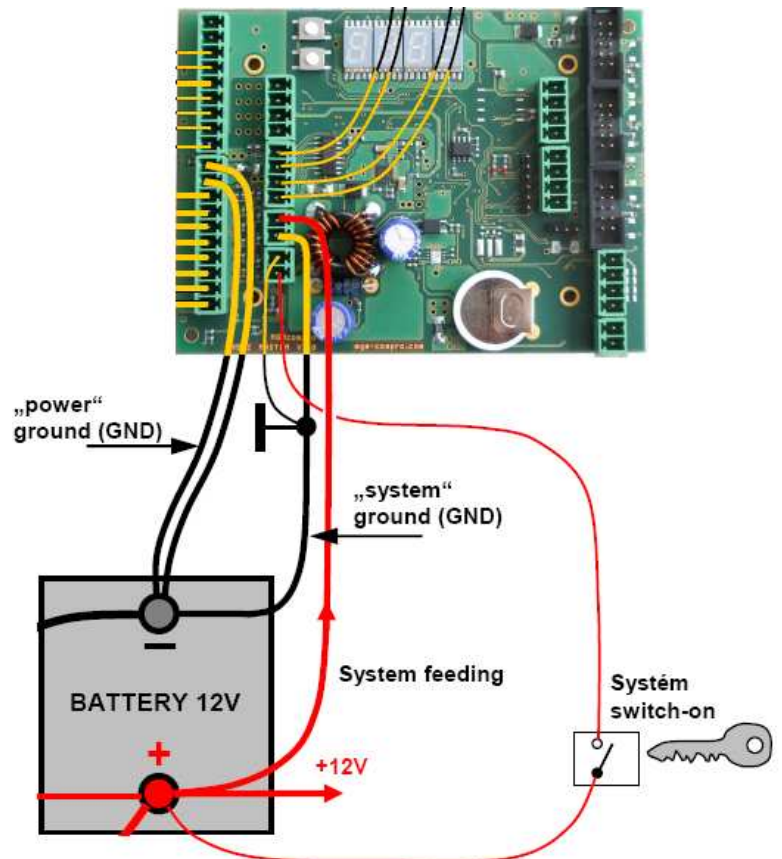
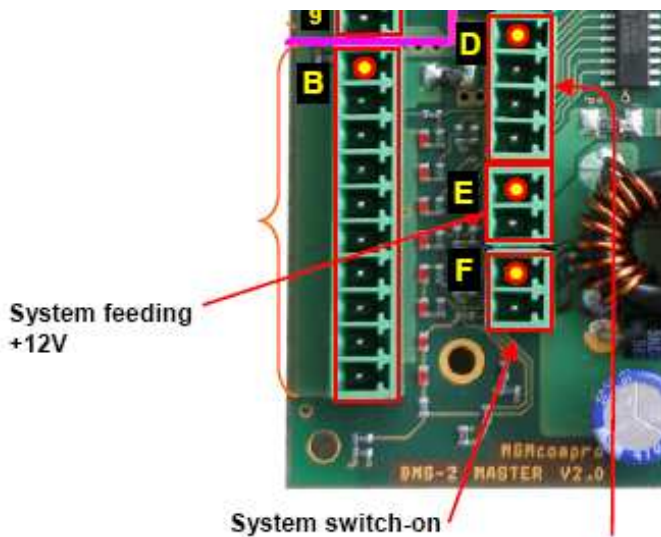
RT-BMS Component Information



Frequently Asked Questions concerning the RT-BMS system and installation

Q: After the Power-Up of the Master-Unit (with 4 connected slave-units) the Master counted from 000...128 (LED-display), after the counting there was a "004" visible. After the "004" the system made a shut-down and afterwards there was no possibility for an PC-communication.

Answer: After the power-up, the BMS Master performs the Power-up Sequence. After that it returns to low-power Stand-by mode. In order to start operation, the +12V must be connected to Pin2 of the F connector (System Switch)



Q: Does there exist an installation and operating manual of the RT BMS Master?

Answer: Yes, there is a wide range of information provided on-line. At this moment all information published concerning the RT-BMS system is available on this link: <http://gwl-power.tumblr.com/tagged/RT-BMS>

Q: I received a BMS Master unit, but it does not work.

Answer: It may happen, but it is very unlikely. Before shipping the BMS to customers we check the function of each BMS Master at a model configuration. This means a fully working and tested unit was shipped to you. It is very unlikely that the unit would get damaged by itself just during the transport.

Q: Do you have a troubleshooting list?



Answer: Based on our experience most users get lost with the installation when installing all CBU units at the same time. We strongly suggest that before your first installation of the BMS, you make a demo setup with just 4 cells (12V). This way you can learn how to work with the BMS, CBU, how to setup and operate the system. Additionally it is easy and safe to work with 12V. Only after you get the skills of using the RT.BMS, we suggest you continue to install the whole system.

Q: We want to install 60 cells for a 180V system, do you have any recommendations?

Answer 1: Be careful with high DC voltage. The high voltage may create lethal currents that may kill you or harm you. In simple words, we recommend to build the battery pack with blocks of max 16 cells (nominal 48V). You should connect these blocks together only if you are 100% finished with the installation of the BMS and the system on each block is working.

Answer 2: Even though you may have already some experience with the RT-BMS system, we strongly suggest that you install the BMS by small number of CBUs. Eg: 4 CBU + 4CBU + 4CBU If you install all modules at one time it may be difficult to locate some problem.

Q: What is the function of the button 1 and button 2?

Answer: At this moment, there is no user function.

Q: Is it possible to make the hardware reset of the BMS Master?

Answer: Yes. However please contact us for the information on the reset before you try to reset the unit. Technically there is no need for user to reset the unit.

<http://www.yttrium-power.com/>

GWL Europe Ltd., 2nd Floor, 3 Barclays Court Ave. St Peter Port, Guernsey GY1 6AW, The Channel Islands, Europe.
Email: info@gigawavelink.com

Auto88 - EV & Power Solutions, c/o iqwifi a.s., Prumyslova 11, Praha 10, CZ-10219 Czech Republic, EU
Email: auto88@auto88.cz, phone: +420 277 007 512 EU VAT ID: CZ27651851