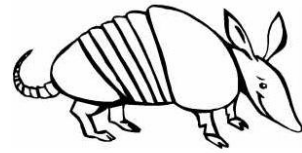
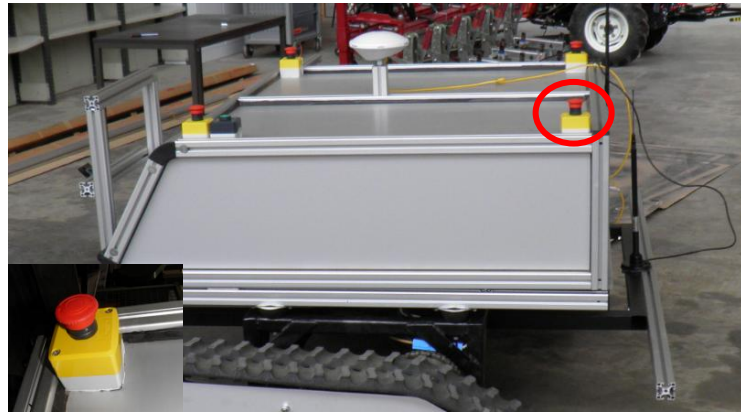


USER MANUAL

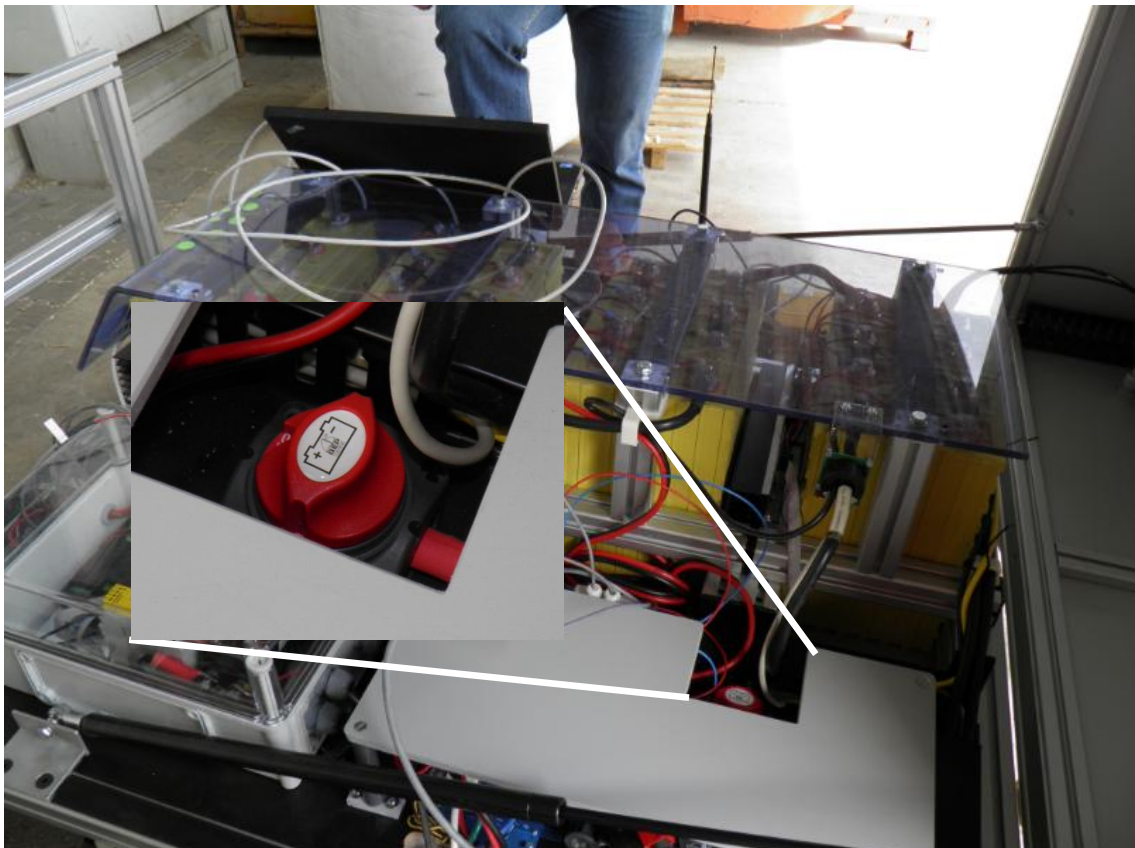
HOW TO START ARMADILLO SCOUT



1. Press one or more of the four emergency stops on the robot (they are only for disabling the caterpillar motors). This is to ensure that Armadillo Scout is safe while it is powered on.



2. Open the lid and turn on the main switch on the robot (the red one, it enables or disables the entire Armadillo).



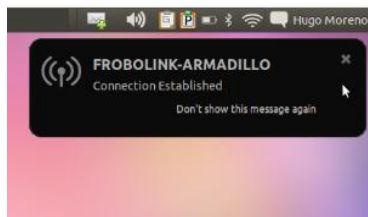
3. The FroboBox (the grey box) computer on board should power on automatically and the network should also start automatically.



4. Connect to the FroboBox using *ssh* (secure shell) via Wifi (wireless)

- **Log in**

1. Connect to FroboLink-Armadillo wireless network



2. User: frobobox / Password: robotbil

3. Open a new terminal, and log in:

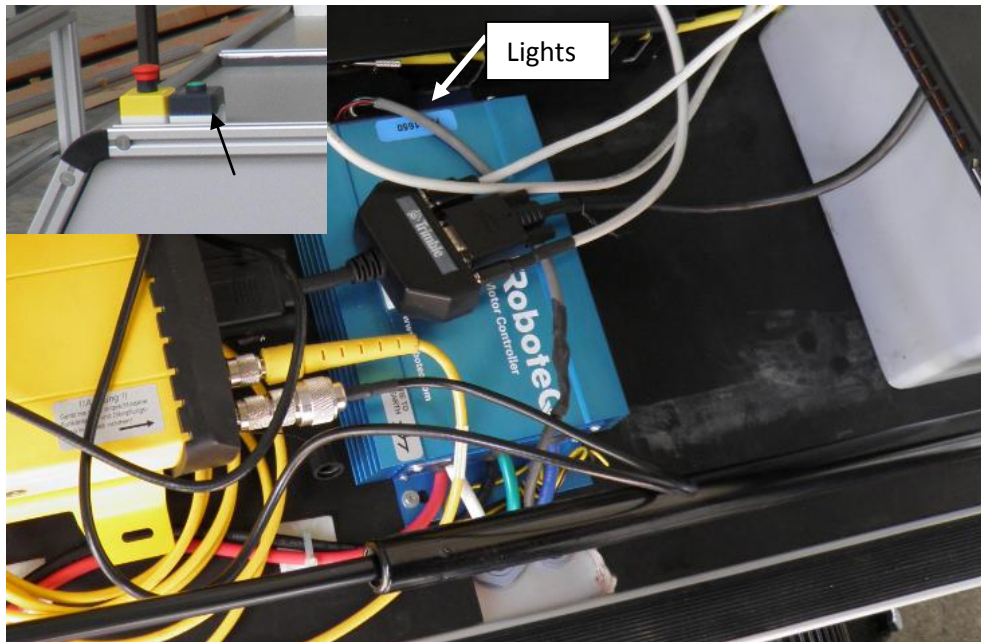
Connect to frobobox: *ssh frobobox @192.168.0.2*.

```
frobobox@frobobox: ~  
File Edit View Search Terminal Help  
hugo@mpttop:~$ ssh frobobox@  
frobobox@:~$ ssh frobobox@  
frobobox@:~$ ssh frobobox@192.168.0.2  
frobobox@192.168.0.2's password:  
Welcome to Ubuntu 11.10 (GNU/Linux 3.0.0-17-generic i686)  
  
* Documentation:  https://help.ubuntu.com/  
  
0 packages can be updated.  
0 updates are security updates.  
  
Last login: Thu Apr 26 09:37:29 2012 from 192.168.0.3  
frobobox@frobobox:~$
```

4. User: frobox / Password: robotbil

Note: the password won't be displayed

5. Run the command: `roslaunch fmCore armadillo_scout.launch` ("tab completion" can be used).
6. When FroboMind is running, release all emergency stops and press the green button. There should be an audible 'clonk' sound (because of the relay) from the grey box, and lights on the two blue RoboteQ controllers should come on.



7. Press button 1 and 2 simultaneously on the Wii remote to enable its BT (Blue Tooth) discovery mode. There should be rapidly blinking lights in one or more of the blue LED's on the Wii remote (the number of blinking lights indicates the wiimote's battery level). Make sure that the armadillo lid is closed!!



8. The Armadillo can now be operated by holding down button 'B' while gently tilting the wiimote.



9. Press the 'A' button to increase the speed. Don't use the 'A' button until you are sure you can control the robot, so at the very beginning it must be tilted softly. The manoeuvres have to be gentle.



Turbo Button



10. Be careful! It's a powerful vehicle!

Note: Health status of the battery: 51.2 Volts average at maximum charge. Below 40 Volts it must be recharged.