

## CATEGORIES

## Shopping Cart

- ▶ Your Cart is Empty
- ▶ [View Cart](#)

## Products

- ▶ [Accessories](#)
- ▶ [ALIX WIFI](#)
- ▶ **Car PC Automotive Computing Solutions**
  - ▶ [VoomPC-2 Car PC Barebone \(Intel\)](#)
  - ▶ [VoomPC-2 Car PC Enclosure](#)
  - ▶ [VoomPC CarPC Enclosure](#)
  - ▶ [VM7000 7" touchscreen](#)
  - ▶ [SONY Slim Sony Optiarc Drive](#)
  - ▶ [M1-ATX](#)
  - ▶ [M2-ATX](#)
  - ▶ [M2-ATX-HV](#)
  - ▶ [M3-ATX](#)
  - ▶ [M3-ATX-HV](#)
  - ▶ **M4-ATX**
- ▶ [Embedded Systems](#)
- ▶ [Enclosures](#)
- ▶ [Flash Drives](#)
- ▶ [Hard Drives 2.5"](#)
- ▶ [miniPCI and mPCI-E](#)
- ▶ [Motherboards](#)
- ▶ [Memory](#)
- ▶ [picoLCD](#)
- ▶ [picoPSU - Power Supplies](#)
- ▶ [Video Cards](#)

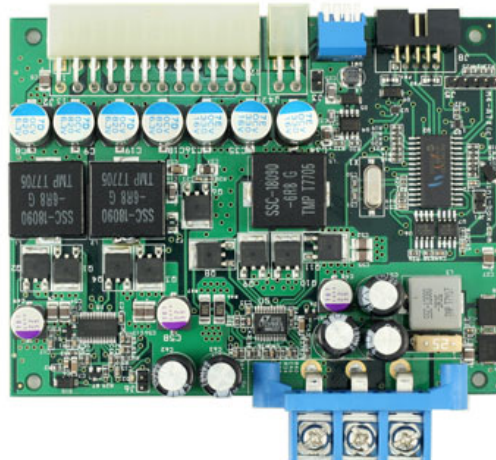
## INFORMATION

- [Company](#)
- [OEM Information](#)
- [Privacy Policy](#)
- [Warranty and Returns](#)
- [Ordering Info](#)
- [Resellers](#)
- [Support](#)

## SEARCH



## M4-ATX, 250w output, 6v to 30v wide input Intelligent Automotive DC-DC Car PC Power Supply



Designed and Manufactured by MINI-BOX.com



Quantity	Price:
1 - 9	\$89.50
10 - 49	\$85.50
50 - 99	\$79.00
100 +	\$75.00

[More: Get Quote](#)

Quantity:



Availability: Usually ships in 24h.

## FEATURES

### NEW! Plug-In Smart car PC PSU

- 250 Watts (300 Watts peak)
- 20/24 pin ATX, 6-30V wide input
- Programmable timing settings via USB
- Intelligent shutdown controller
- ON/OFF motherboard control
- Survives vehicle engine cranks
- Battery deep discharge prevention
- High efficiency, 250 watts output
- "Anti-Thump" Amplifier remote control
- <1.5mA standby current
- VIA, Intel, AMD CPU support
- OSCON / POSCAP (solid polymer) capacitors, Japan
- manufactured by [mini-box.com](#)
- **ROHS compliant version**

### Download the M4-ATX Software

USB 2.0 interface

## DOWNLOADS

- ▶ [Manual](#)
- ▶ [Linux/MacOS/BSD Api](#)
- ▶ [Dimensions and Drills](#)
- ▶ [RoHS Certificate of Compliance](#)
- ▶ [CHANGELOG](#)
- ▶ [Long life](#)

## TOP SELLER



**picoPSU-120**  
Tiniest DC-DC ATX power supply

## NEW PRODUCT



**Y-PWR**  
Hot Swap, Load Sharing Controller



**picoPSU-160-XT**  
high reliability 160watt (200watt peak) , DC-DC ATX PSU



**DCDC-USB**  
Intelligent DC-DC converter with USB interface



**M350 Universal Mini-ITX enclosure**  
The Swiss Army Knife of Embedded mini-ITX Computing



**picoLCD 256x64 Sideshow (OEM)**  
picoLCD 256x64 auxiliary display with Vista Sideshow support

## PRODUCT DESCRIPTION

### Intelligent Automotive / Car DC-DC ATX PC Power Supply

M4-ATX is an intelligent, high power, vehicle (car / boat / electric cart) DC-DC ATX PC power supply designed for use with car pc or general purpose battery powered applications. Designed to provide power and to control the motherboard's ON/OFF switch based on ignition status, M4-ATX is a wide input (6 to 30V) vehicle / car / battery operated ATX power supply capable of surviving tough car engine cranks (down to 6V) as well as transient over-voltage situations. Connect it to your car / boat / RV / solar battery and power up your PC! By using Patent Pending HyperWatt[™] technologies, M4-ATX packs an impressive amount of power relative with its small footprint. M4-ATX has several key advantages over traditional power supplies:

- Programmable shutdown / sleep modes via optional serial cable.
- Fits any motherboard equipped with a 20 or 24pin ATX connector.
- 100% silent, fanless, no moving parts.
- Operates from 6-30V, multi-chemistry batteries supported.
- Highly efficient design, does not produce a lot of heat.
- Works with any Intel Core Duo as well as all VIA or AMD processors.

Firmware on the M4-ATX can be changed to accommodate different behaviours. OEM / reseller integration is welcome. Please send an email to [oem-queries@mini-box.com](mailto:oem-queries@mini-box.com) with your custom requirements.

**EUROPEAN DISTRIBUTOR**  
[www.carftt.com](http://www.carftt.com) - company specialized in Car PCs solutions.



### 1. M4ATX System Tray Monitor & Setup Application

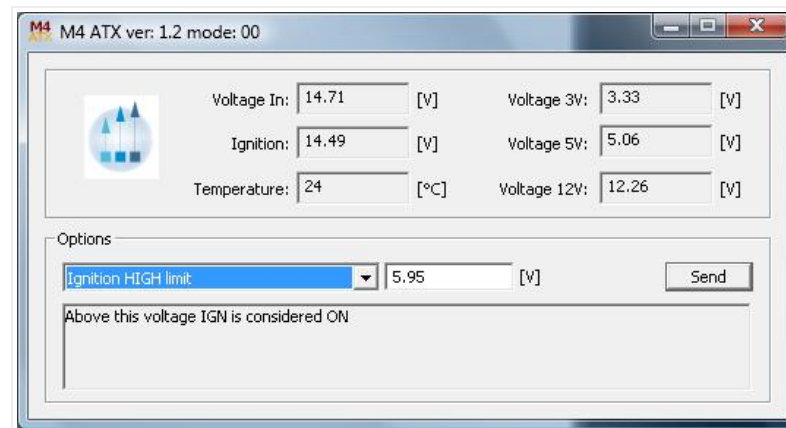
This install kit provides two applications. M4ATXTray.exe which allows monitoring the M4ATX power supply voltages and temperature (needs to be connected thru a USB cable to the computer). The application adds a small icon on windows system tray which on mouse over displays the voltages and temperature, and can be customized with several skins.

[Download M4ATX System Tray Monitor & Application](#)

See below for some example skin screenshots.



The second application M4\_ATX.exe allows to setup various parameters of the power supply like ignition voltage limit or shutdown voltage limit.



## 2. M4ATX OEM Setup Application

[Download M4ATX OEM Setup Application](#)

**WARNING:** This program is intended only for OEM or Advanced Users. Mini-Box.com cannot be held responsible for any damage that might come from the use of this software done to your power supply or other computer components Application allows advanced setup of M4ATX parameters.

## 3. Linux/MacOS/\*BSD Api

Download [m4api.tar.gz](#)

updated versions can be found in the Git repository at the [Robotics @ Maryland](#) website.

### Examples

```
# Monitor input and output voltage levels:
$ ./m4 -diag loop
-- 1262486581
VIN: 11.34
IGN: 11.23
33V: 3.33
5V: 5.06
12V: 12.18
TEMP: +28
-- 1262486582
VIN: 11.34
IGN: 11.34
...

# Display your PSU's configuration:
$ ./m4 -config
IGN_HIGH: 5.84 V
IGN_LOW: 5.50 V
IGN_DBC: 500 ms
PSU_DELAY: 1 sec
...

# Check or update specific variables:
$ ./m4 -config VIN_MIN_ON
9.55 V
$ ./m4 -config VIN_MIN_ON 10.0
$ ./m4 -config VIN_MIN_ON
9.99 V
```

## RELATED ITEMS

## Related items for M4-ATX

**M4-ATX SFX/ATX enclosure**

- M4-ATX SFX/ATX enclosure**
- SFX / ATX enclosure for [M4-ATX](#)
  - Replace regular desktop PSUs
  - 60x60x25mm fan included
  - Native SFX formfactor
  - ATX adapter plate included

Price: \$2.95

Quantity:

**USB 5 pin to 5 pin cable**

- USB 5 pin to 5 pin cable**
- 235mm cable (~9 in)
  - end\_1 is 0.1" plug (connects to the USB-LCD)
  - and\_2 is 0.1" (connects to internet PC USB header) . Note: On the motherboard USB header only one row (1x5) will be used, the 2nd row is left open)

Price: \$1.50

Quantity:

